

IN/EDIT  
*Collection*

*“Simplicity is the perfect harmony between  
the beautiful, the useful and the appropriate.”*

Frank Lloyd Wright









## *Our Mission*

To create an exclusive line of products for the corporate gift market, embodying timeless style and using only the most noble and authentic know-how in Switzerland and the highest caliber craftsmen. Simple and elegant – what makes IN/EDIT special is its approach to meeting its clients' needs and its thorough understanding of the world of luxury. Each project is approached with professionalism, human touch, and aesthetic sensitivity. IN/EDIT's core philosophy encompasses three very important French principles.

*Savoir faire*

*Savoir-être*

*Art de vivre*





## *Savoir faire*

Excellence  
Competences & Skills  
Métiers d'art  
Expertise & Knowledge  
Art & Crafts





## *Savoir-être*

Empathy  
Responsibility  
Respect  
Attentiveness  
Loyalty  
Transparency  
Tailor made  
Slow Luxury





## *Art de vivre*

“Art de vivre” is the combination of know-how and daring which gives sense to a slow, meaningful and simple life. IN/EDIT creates beautiful things with fine textures and colors, made to last, and to adorn our interior.

IN/EDIT  
*Catalogue*



## *In the Home*

Home is a place of warmth, comfort, and familiarity. With these personalized gifts from IN/EDIT, you can make sure that your clients and loyal customers have a taste of the special way of life that we provide. Made with warmth, and attention to quality materials and details, these gifts for the home are true examples of “Art de vivre.”

opposite page :

*leather tissue boxes w/logo*







opposite page :  
*elephant keychains* IN013 • *blown glass ball* IN002  
• *scented candle w/display case* • *decorated chopsticks*



this page: *chocolate coffee stirrer* IN021  
• *chocolate ball w/ gift inside* IN006  
opposite page: *scented candle in display case*





this page: *christmas tree* IN020  
opposite page: *christmas box concept* IN022





### *Artisan Glass*

For those familiar with high-quality luxury goods, there is a tangible feeling attached to a product produced by the hands of a skilled craftsman. IN/EDIT continues the legacy of fine Swiss handcrafting by working with skilled craftsmen who bring with them generations of manufacturing know-how.



this page: *blown glass ashtray* IN005  
opposite page: *blown glass ball* IN001











this page: *airtight container with window* IN011  
opposite page: *pepper/salt mill* IN010



this page: *champagne cork* IN007 • *wine cork* IN012  
opposite page: *wine air pump* IN008







this page: *cashmere blanket* IN015  
• *cashmere scarf* IN003  
opposite page: *newspaper tote*





IN/EDIT's collections combine trends and innovation in a unique manner and are dedicated to those who seek both the constancy of quality and fresh concepts. Thanks to our extensive network of designers and manufacturers, all at the top of their respective fields, every IN/EDIT piece is carefully thought through and crafted, from its inception until the final product is realized. Conceived with love, each product carries the creative traces of the hands through which it has passed.

opposite page: *assorted leather goods*







this page: *elephant keychain* IN013  
 • *magnifying glass* IN018 • *cufflinks* IN016  
 opposite page: *umbrella w/ inside print* IN019





## *Technology*

IN/EDIT is also proud to offer technology-driven gifts. Just as a fine music box was once considered both the height of technological wonder and a luxurious gift, unique, custom-made speakers and other “gadgets” bring joy and convenience to your clients and signify a shift in what it means to live “the good life” in today’s world.

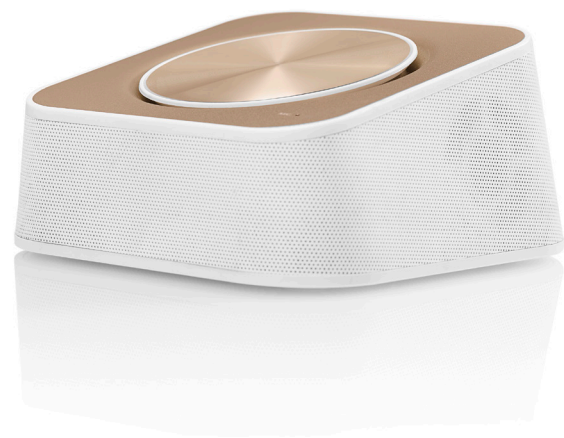








this page: *wireless bluetooth speaker* IN026  
 • *wireless bluetooth speaker* IN032  
 opposite page: *wireless bluetooth speaker* IN027



this page: *wireless bluetooth speaker* IN035  
• *wireless bluetooth speaker* IN024  
opposite page: *speaker* IN025







opposite page: *assortment of bluetooth headsets*





this page: *plug adapter* IN030  
 opposite page: *power bank & handwarmer* IN029  
 • *power bank* IN033





## *Mettre les voiles*

Top end clients are always on the go. With these exclusive gifts dedicated to the traveler comfort, we endeavour to bring the quality and craft that one experiences at home onto the road with them. Finely crafted bags are a hallmark of IN/Edit.



opposite page: *weekender trolley* IN049  
• *weekender bag* IN047





this page: *weekender bag* IN048  
opposite page: *laptop carrying case* IN056







### *Leather craft*

Sometimes the only difference between an ordinary object and an object of special importance lies in the materials used. At IN/EDIT, our choice of materials and finishes influences how our creations are experienced. Textures, colors, and patterns reveal the meaning of, and sublimates the form created.













*suit bag* IN051







business bag IN045



- 24 hour tote bag IN044
- weekender bag IN064

At IN/EDIT, we understand the importance of brand loyalty and trust. Offering a gift—with the simple and sincere wish to give pleasure—is one of the best ways of maintaining a positive relationship and expressing mutual trust. Tailor-made and personalized, the gift shows your loyal customers that you appreciate their patronage and that you value quality in all things.

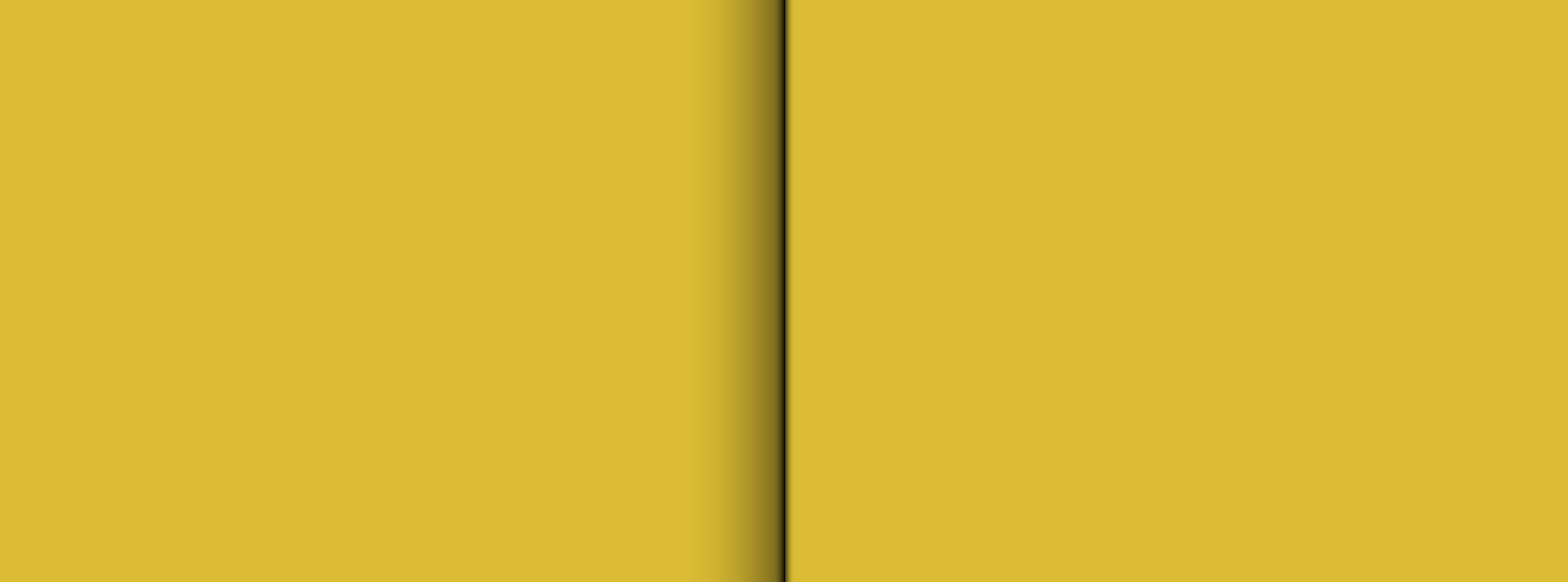
IN/EDIT

Promenade-Noire 6  
CH-2000 Neuchâtel

M +41 79 321 01 90  
celine.surdez@in-edit.ch

[www.in-edit.ch](http://www.in-edit.ch)





IN/EDIT